
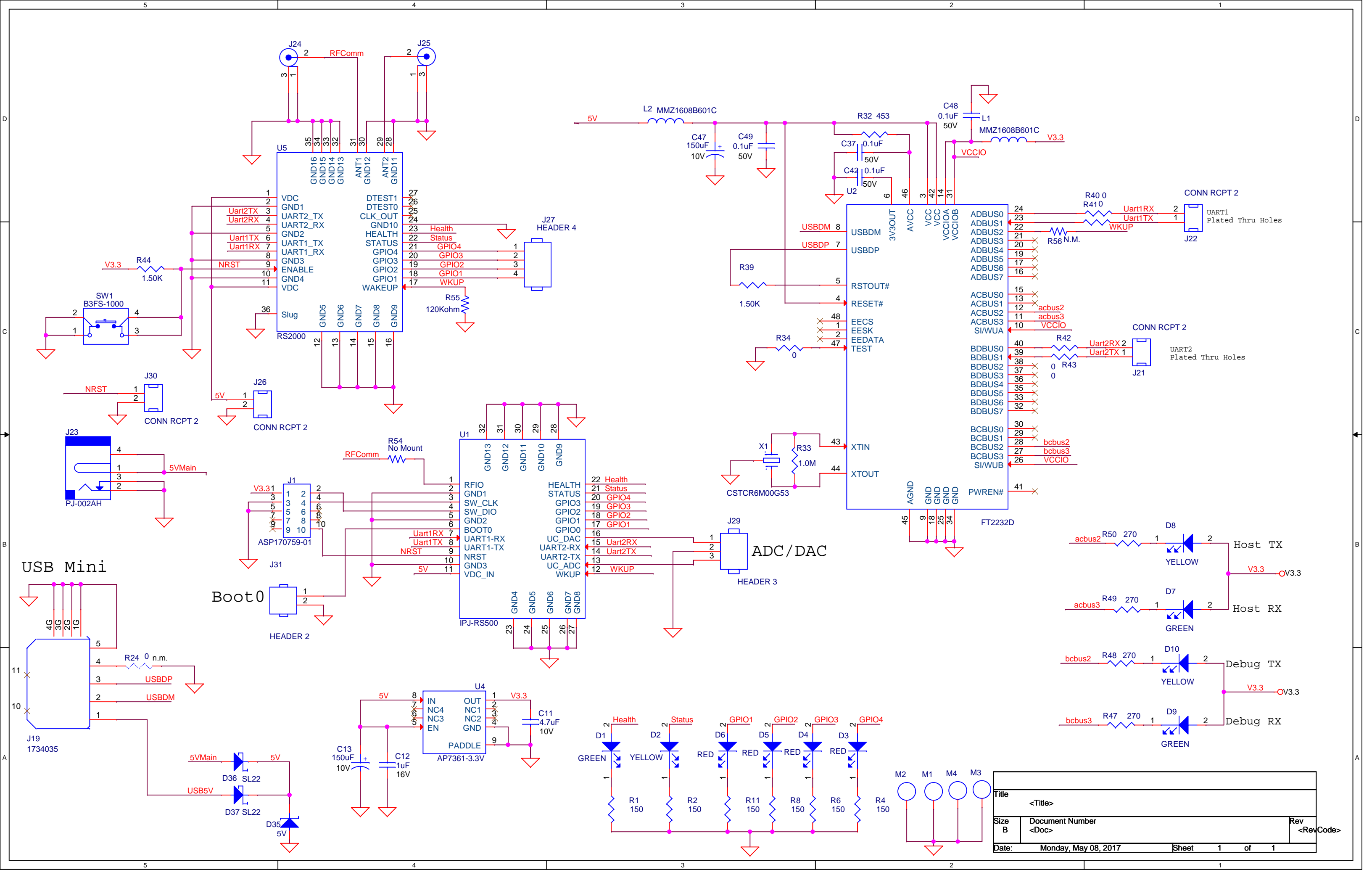


Impinj IPJ-RS2000 / RS500
Simple board

Generic PCBA (FCC)
P/N

Impinj Revision	Date	Decription	Notes
A	10/26/2015	Matches PCB SimplyRS2K.brd	
1.1	5/8/2017	Matches PCB SimplyRS2K_RS500_R1p1.brd	Put DC Jack connector on correctly. - Added power supply OR'ing to deal with both USB and DC Jack connected at the same time. - Removed R53, not needed with supply oring

	Title 01-COVER SHEET	
	Size B	Document Number Impinj Rev A
	Date: Monday, May 08, 2017 Sheet 1 of 2	



Title		
<Title>		
Size	Document Number	Rev
B	<Doc>	<RevCode>
Date:	Monday, May 08, 2017	Sheet 1 of 1