

SWITCHING FROM MULTIREADER TO ITEMTEST

OVERVIEW

MultiReader is a legacy application developed for testing RAIN RFID deployments with Impinj Speedway fixed readers. Following the release of MultiReader, Impinj developed and released a different application, ItemTest, to supersede and eventually replace MultiReader. Unlike MultiReader, ItemTest works with the full range of Impinj reader and gateway product lines.

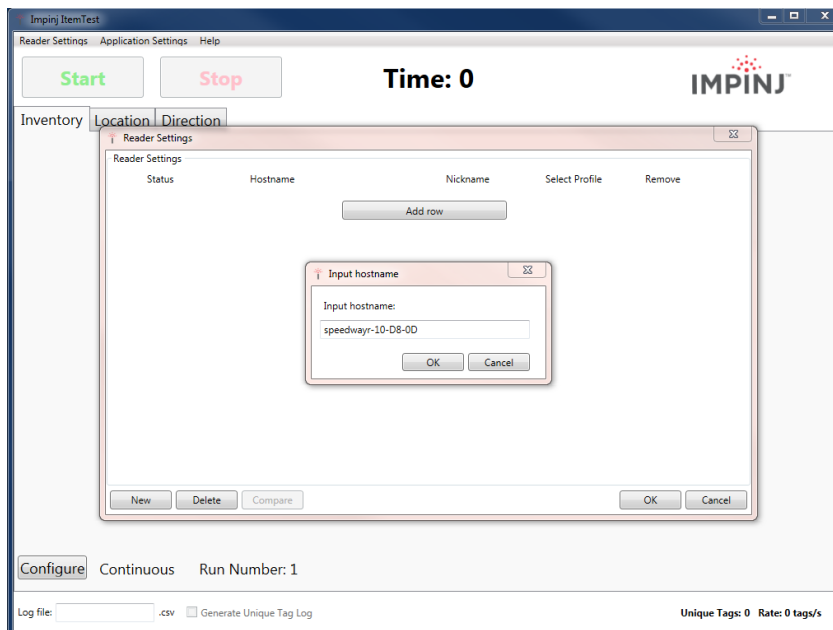
MultiReader is End-of-Life (EOL) as of the release of ItemTest version 1.12.0, which contains nearly all the features provided by MultiReader. The following instructions are intended to assist users in switching from MultiReader to ItemTest.

READING TAGS WITH ITEMTEST

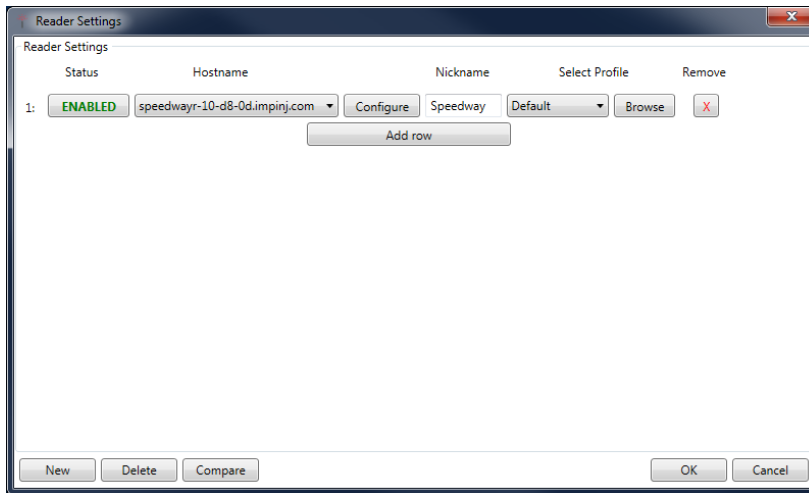
The best way to start using ItemTest is to experiment with reading tags. You will need to have ItemTest installed on a local area network with DNS name resolution.

Follow these steps:

1. Open the ItemTest Software application
2. Click the *Reader Settings* menu
3. Click the *New* button
4. Enter the speedway host name (*speedwayr-XX-XX-XX*, where XX-XX-XX is the last 6 digits of the MAC address) and press OK.

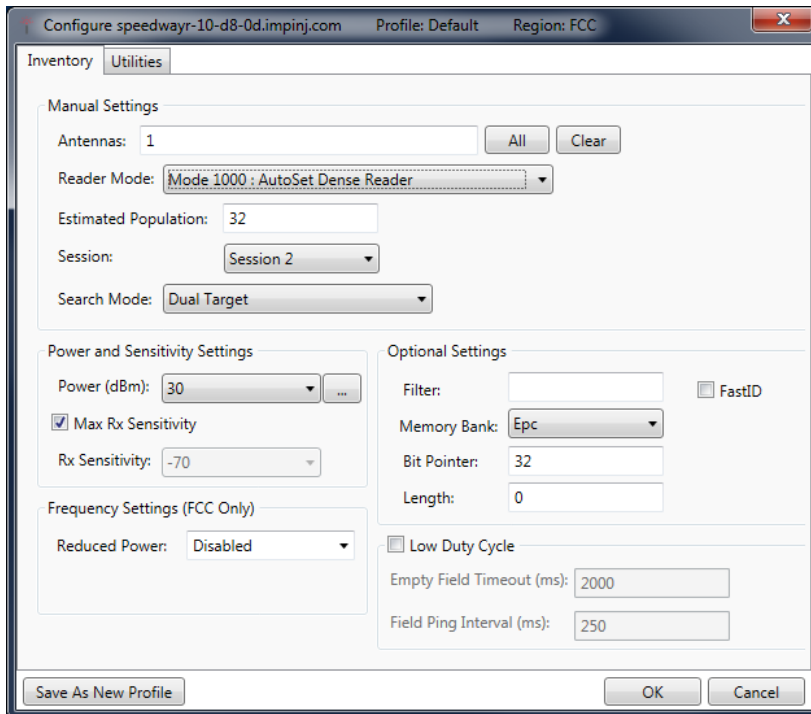


5. Press the *Configure* button

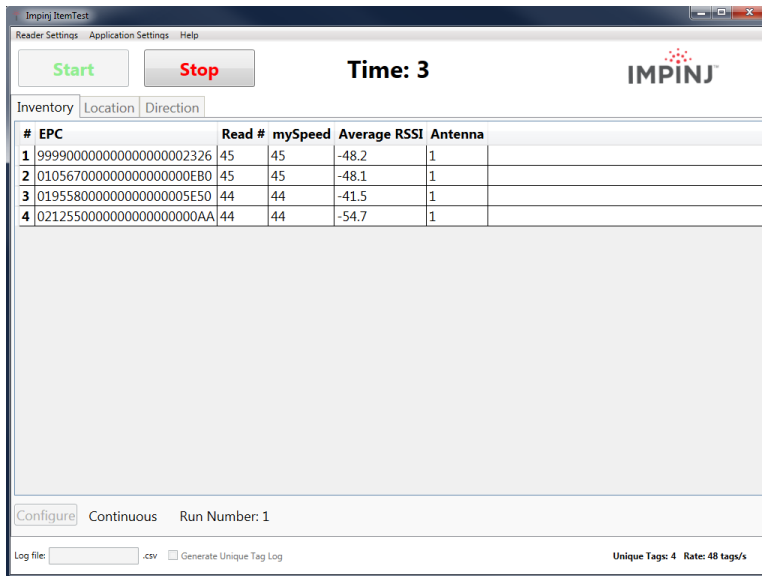


This will bring up the *Configure* dialog:

6. Enter the following settings shown in the dialog below and click *OK*:



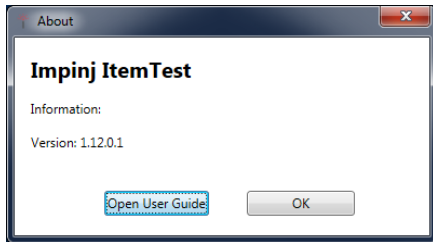
7. Select the *Inventory* tab
8. Place tags in the field of view of the antenna
9. Click the *Start* button to start reading tags



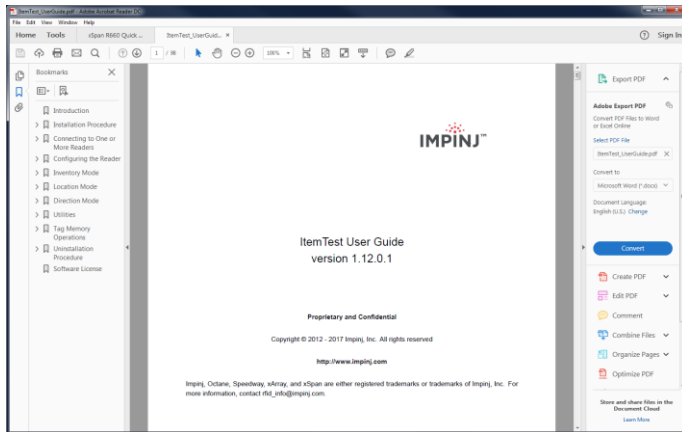
BECOMING AN EXPERT

Users build expertise through using the software and referencing the *Help* system.

Access help from the 'help' menu. Once in the *About* dialog press the *Open User Guide* button:



The user guide describes all features including inventory, location, and direction modes.



For technical issues using ItemTest, please contact your Impinj Authorized Partner. Impinj Partners can contact Impinj Support directly.