

Indy® RS2000 Development Kit Quick Start Guide

Introduction

This document describes how to start reading UHF RFID tags with the Indy® RS2000 Development Kit.

Kit Contents

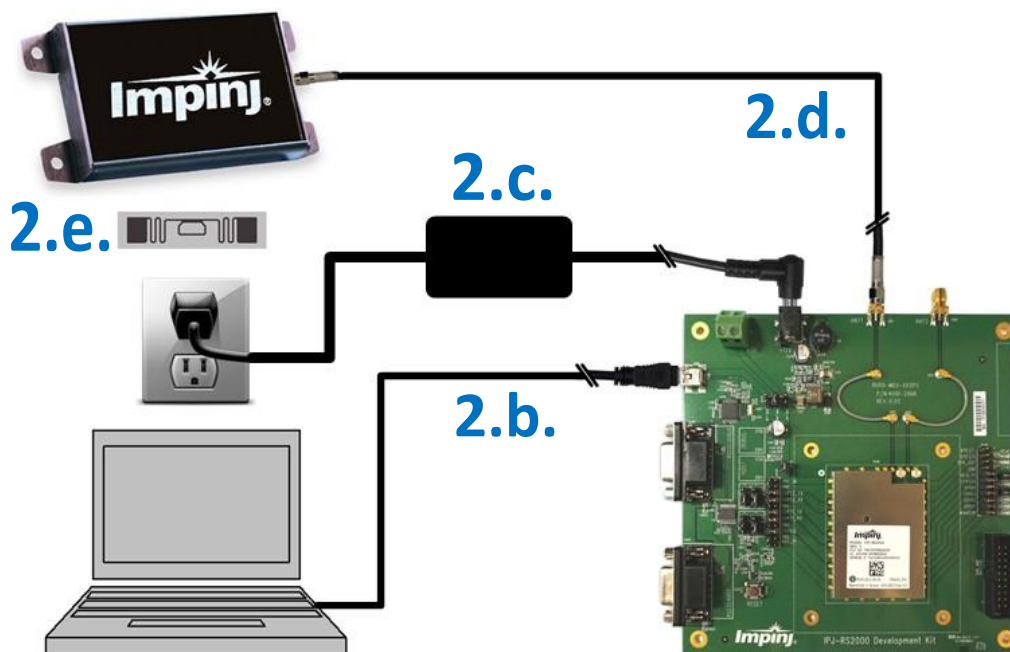
- RS2000 Development Board
- Kit Quick Start Guide
- USB drive containing software tools and documentation
- Impinj Mini-Guardrail Antenna
- Laird Far Field Antenna
- 12 Volt DC Power Supply
- SMA RF Cable
- Mini-USB Cable
- RAIN RFID Tag Samples
- RS2000 Module Samples (2)



Getting Started with the RS2000 Development Kit

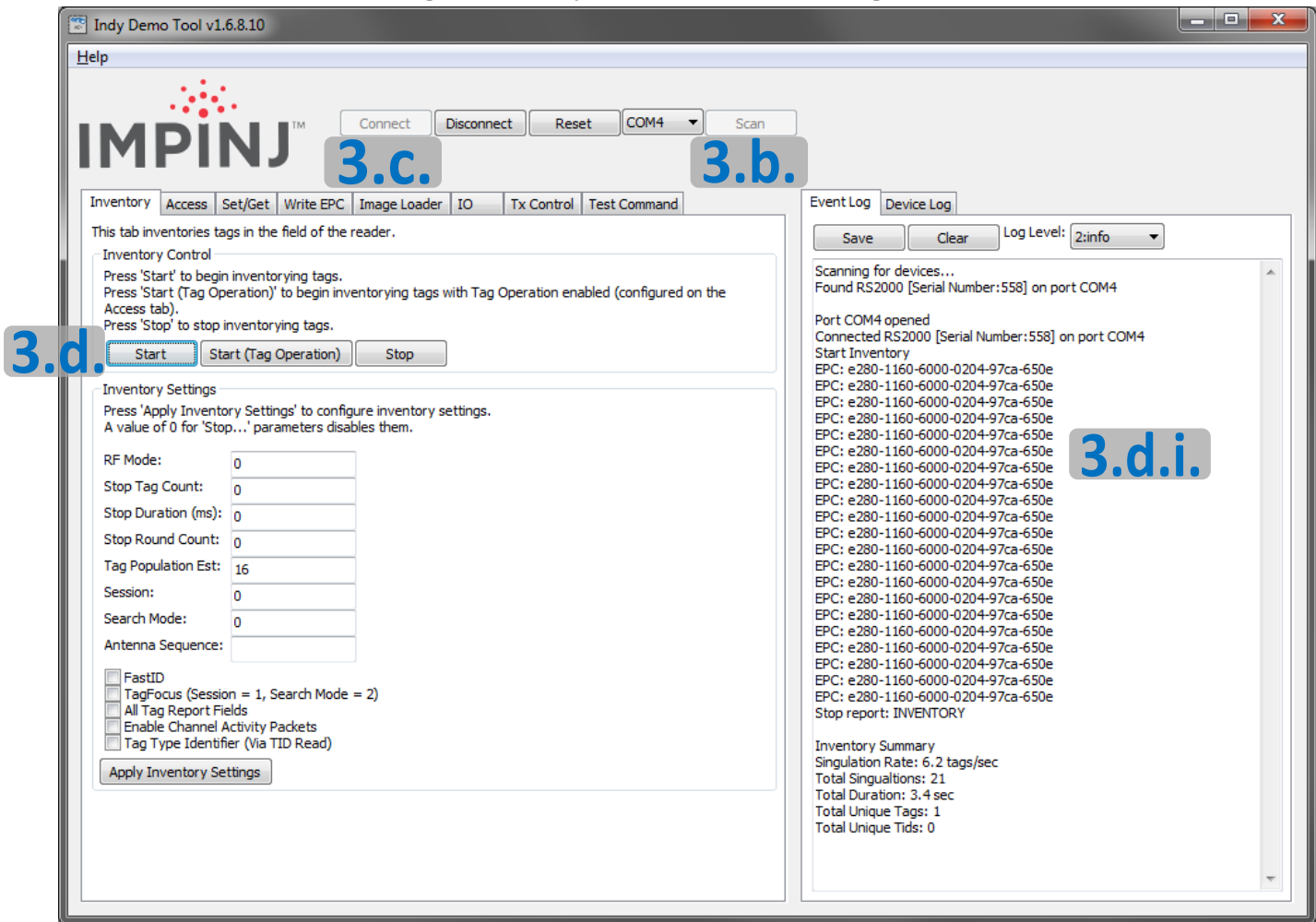
1. Install the Indy Demo Tool software on your Windows PC.
 - a. Copy the [Indy Demo Tool.exe](#) file from the USB drive or download it from support.impinj.com.
2. Configure the RS2000 development kit hardware as shown in [Figure 1](#).
 - a. If you have reconfigured the jumpers since opening the kit, restore the default configuration as described in the “Kit Default Configuration” section of the [RS2000 Hardware User’s Guide](#).
 - b. Connect the kit PCB to your PC using the Mini-USB cable.
 - c. Connect the 12 Volt DC power supply to a power source, and the kit PCB
 - i. At this point, the green “Health” LED on the right edge of the kit PCB should start blinking.
 - d. Connect the ANT1 port (J201) on the kit PCB to the Mini-Guardrail antenna using the SMA RF Cable.
 - e. Place one of the UHF RFID tags on top of the antenna.

Figure 1 – RS2000 Development Kit Hardware Configuration



3. Start performing tag reads as shown in [Figure 2](#).
 - a. Open the Indy Demo Tool software by double-clicking on the “[Indy Demo Tool.exe](#)” file.
 - b. Press the “Scan” button to detect the COM port corresponding to the development board.
 - c. Press the “Connect” button to connect to the development board.
 - d. Under the “Inventory” tab, start an inventory by pressing the “Start” button.
 - i. At this point, the “Event Log” on the right hand side of the GUI will show the stream of EPCs of the tags that are read by the Indy RS2000 via the mini-guardrail antenna.
 - e. Try moving tags relative to the read field of the antenna, and observe the change in the reads displayed in the Event Log.

Figure 2 – Indy Demo Tool GUI Configuration



4. Read through the more detailed documentation associated with the part and kit, including the [RS2000 Datasheet](#), [RS2000 Hardware User Guide](#), and [RS2000 IRI Toolkit User Guide](#), all available at support.impinj.com.

These products may be covered by one or more U.S. patents. See www.impinj.com/patents for details.