

# Indy® RS500 Development Kit Quick Start Guide



## Introduction

This document describes how to start reading UHF RFID tags with the Indy® RS500 Development Kit.

## Kit Contents

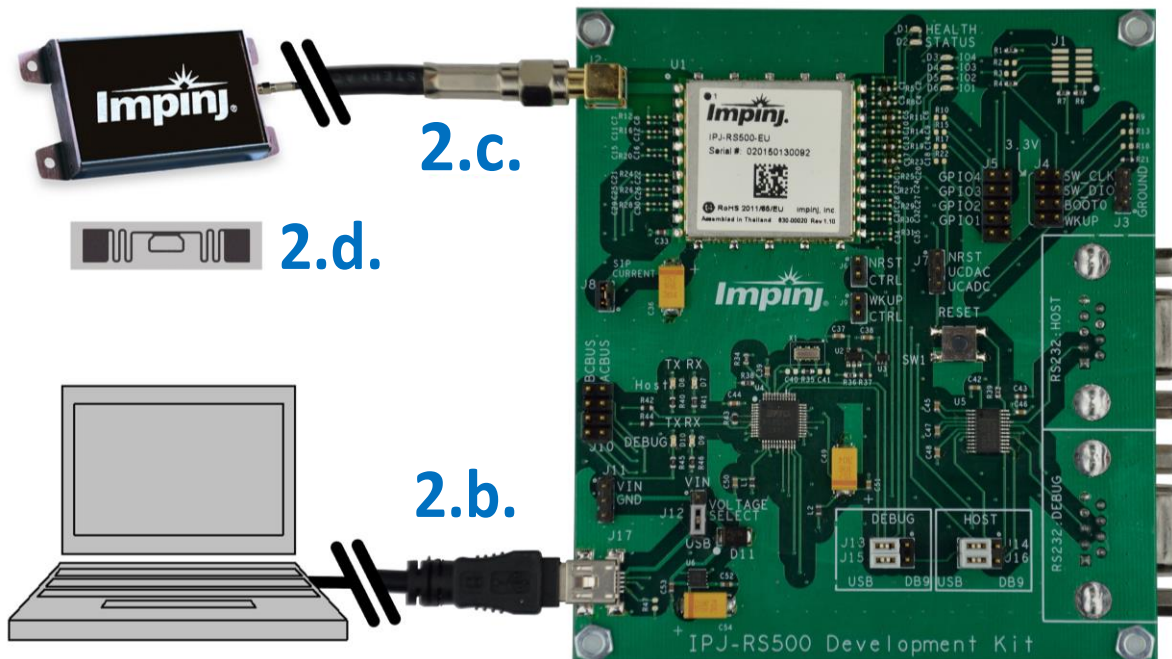
- RS500 Development Board
- Kit Quick Start Guide
- USB drive containing software tools and documentation
- Impinj Mini-Guardrail Antenna
- Laird Far Field Antenna
- SMA RF Cable
- Mini-USB Cable
- DE-9 M-F Cable
- UHF RFID Tag Samples
- RS500 Module Samples (3)



## Getting Started with the RS500 Development Kit

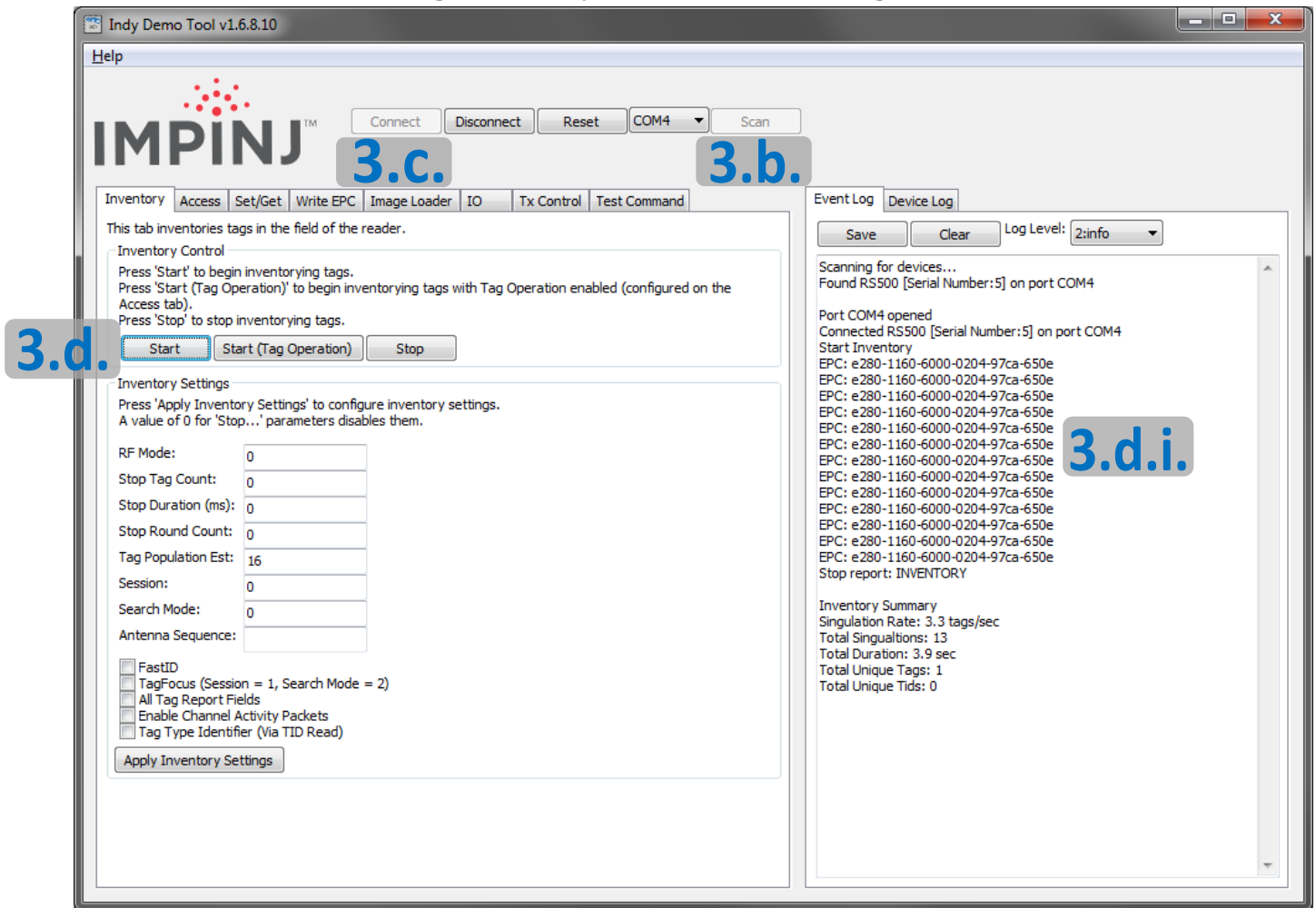
1. Install the Indy Demo Tool software on your Windows PC.
  - a. Copy the [Indy Demo Tool.exe](#) file from the USB drive or [support.impinj.com](http://support.impinj.com).
2. Configure the RS500 development kit hardware as shown in [Figure 1](#).
  - a. If you have reconfigured the jumpers since opening the kit, restore the default configuration as described in the “Kit Default Configuration” section of the [RS500 Hardware User’s Guide](#).
  - b. Connect the kit PCB to your PC using the Mini-USB cable.
    - i. At this point, the “Health” LED, D1 at the top of the PCB, should start blinking.
  - c. Connect the kit PCB to the Mini-Guardrail antenna using the SMA RF Cable.
  - d. Place one of the UHF RFID tags on top of the antenna.

Figure 1 – RS500 Development Kit Hardware Configuration



3. Start performing tag reads as shown in [Figure 2](#).
  - a. Open the RS500 Development Tool software by double-clicking on the “[Indy Demo Tool.exe](#)” file.
  - b. Press the “Scan” button to detect the COM port corresponding to the development board.
  - c. Press the “Connect” button to connect to the development board.
  - d. Under the “Inventory” tab, start an inventory by pressing the “Start” button.
    - i. At this point, the “Event Log” on the right hand side of the GUI will show the stream of EPCs of the tags that are read by the Indy RS500 via the mini-guardrail antenna.
  - e. Try moving tags relative to the read field of the antenna, and observe the change in the reads displayed in the Event Log.

**Figure 2 – Indy Demo Tool GUI Configuration**



4. Check out the more detailed documentation associated with the part and kit, including the [RS500 Datasheet](#), [RS500 Hardware User Guide](#), and [RS500 IRI Toolkit User Guide](#), all available at [support.impinj.com](http://support.impinj.com).

These products may be covered by one or more U.S. patents. See [www.impinj.com/patents](http://www.impinj.com/patents) for details.