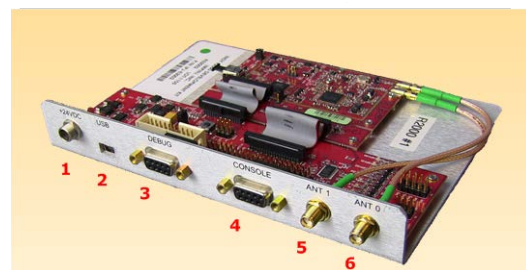


This guide provides steps and tips to help you quickly begin operating your Indy® Reader Development Platform. All the components necessary to begin inventorying RFID tags are included in the kit.

Box Contents

- Indy R2000 or R1000 Development Platform
- Quick Start Guide
- Software tools and documentation CD-ROM
- DC power adapter
- US AC power cord
- EU AC power cord
- USB-to-serial adapter
- Serial cable
- USB cable
- RF cable
- Impinj Mini-Guardrail near-field antenna
- Laird far-field antenna
- 10 Indy R2000 or R1000 chip samples
- ETSI SAW filter kit
- May include tag samples from Impinj inlay partners* featuring Monza® chips



INDY DEVELOPMENT PLATFORM CONNECTORS

- 1 +24 VDC locking power supply connector
- 2 USB port
- 3 Debug serial port (DB-9)
- 4 Console serial port (DB-9)
- 5 Antenna 1 RF port (SMA)
- 6 Antenna 0 RF port (SMA)

Reading Tags with the Indy Development Platform

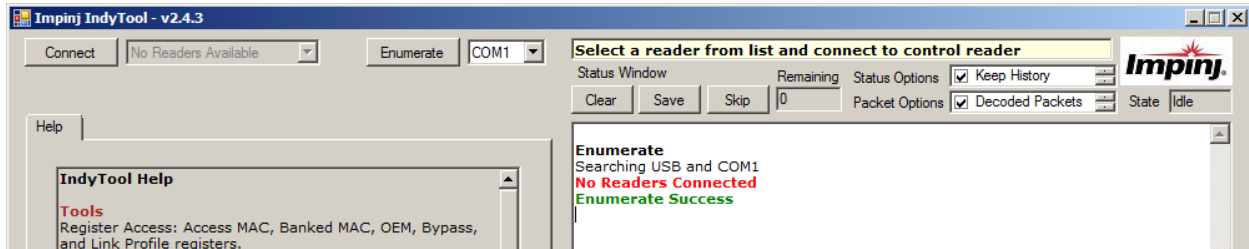
1) Setup connections

- a) Connect the ANT 0 RF port on the Indy Development Platform to the Mini-Guardrail antenna using the RF cable.
- b) Connect the serial cable to the USB-to-serial adapter and plug the USB end into a host computer. Attach the serial end to the Indy Development Platform console serial port.
- c) Apply power using the DC power adapter and power cord.
- d) Windows 7 computers will automatically discover the Indy hardware and install the device driver. If the computer is using Windows XP or the driver installation fails, install the driver included on the CD-ROM. A demonstration of the installation process can be viewed at http://learn.impinj.com/articles/en_US/RFID/Setting-up-Indy-Software-Tools

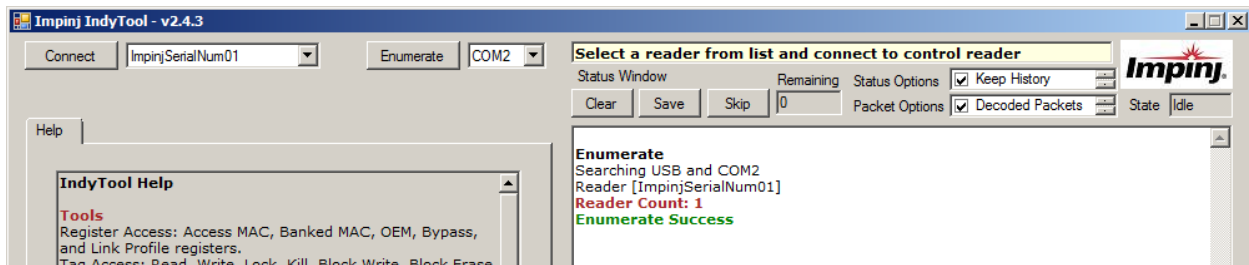
2) Install IndyTool application

- a) Insert the CD-ROM and navigate to the Tools\IndyTool directory.
- b) Double click the IndyTool installer file to launch the installation wizard.
- c) When prompted, assign the installation directory to:
[Program Files]\IMPINJ\IndyTool
A desktop shortcut to the application is generated.
- d) Run IndyTool from the Start Menu or by double clicking the IndyTool icon.
NOTE: There is a possibility that the COM port assigned by the driver will not match the port assumed by the application. "No Readers Available" will display in the upper right if this is the case (see example below).

*Samples are provided courtesy of our inlay partner(s), and may not be available with every platform. Samples are provided for use in reader setup and to experience unique Monza features, and are not intended to represent all the Monza-based inlay varieties available from Impinj inlay partners. We encourage you to ask your provider about RFID labels or inlays featuring Monza tags.



- e) If the COM ports are mismatched, then navigate to the Device Manager in Windows by right clicking on Computer or My Computer, select Device Manager, expand Ports (COM & LPT), and note the COM assignment for the USB Serial Port. Go back to IndyTool and change the COM selection next to the Enumerate button.
- f) Close IndyTool and restart it for the new COM port assignment to take effect. The application pane should appear as below.



- g) Click the Connect button and IndyTool will connect to the Indy Development Platform.

3) Inventory tags

- a) Place one or more tags on the plastic cover of the Mini-Guardrail antenna.
- b) Select the Inventory tab. Set Inventory to Single_Cycle, Antenna 0, 30.0 dBm Power, and select Div 24 (FCC).
- c) Click the Start button. The inventory results, including the EPC of the tag(s), will be displayed.
- d) See the IndyTool PDF on the CD-ROM to learn more about configuring the Indy reader and controlling Gen2 inventory and access operations using IndyTool.

Documentation and Help

- Indy software and hardware documentation is available on the CD-ROM in the Documents directory.
- For help, visit or contact us at:
 - www.impinj.com
 - support@impinj.com
 - support.impinj.com

Notices: Copyright © 2012-2013, Impinj, Inc. All rights reserved.

Impinj gives no representation or warranty, express or implied, for accuracy or reliability of information in this document. Impinj reserves the right to change its products and services and this information at any time without notice.

EXCEPT AS PROVIDED IN IMPINJ'S TERMS AND CONDITIONS OF SALE (OR AS OTHERWISE AGREED IN A VALID WRITTEN INDIVIDUAL AGREEMENT WITH IMPINJ), IMPINJ ASSUMES NO LIABILITY WHATSOEVER AND IMPINJ DISCLAIMS ANY EXPRESS OR IMPLIED WARRANTY, RELATED TO SALE AND/OR USE OF IMPINJ PRODUCTS INCLUDING LIABILITY OR WARRANTIES RELATING TO FITNESS FOR A PARTICULAR PURPOSE, MERCHANTABILITY, OR INFRINGEMENT.

NO LICENSE, EXPRESS OR IMPLIED, BY ESTOPPEL OR OTHERWISE, TO ANY PATENT, COPYRIGHT, MASK WORK RIGHT, OR OTHER INTELLECTUAL PROPERTY RIGHT IS GRANTED BY THIS DOCUMENT.

Impinj assumes no liability for applications assistance or customer product design. Customers should provide adequate design and operating safeguards to minimize risks.

Impinj products are not designed, warranted or authorized for use in any product or application where a malfunction may reasonably be expected to cause personal injury or death or property or environmental damage ("hazardous uses") or for use in automotive environments. Customers must indemnify Impinj against any damages arising out of the use of Impinj products in any hazardous or automotive uses.

Impinj, Indy, and Monza are registered trademarks of Impinj, Inc. All other product or service names are trademarks of their respective companies.